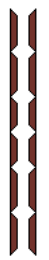


15. JÁSZAI MARI TER
KISPESTI VASÚTHID

15. JÁSZAI MARI TER
KISPESTI VASÚTHID



„A” Orrész

Napellenző helye

3668

„A” tetőoldalak

8993C

Forgóváz helye^(A)

Forgóváz helye^(B)

„B” tetőoldalak



3668

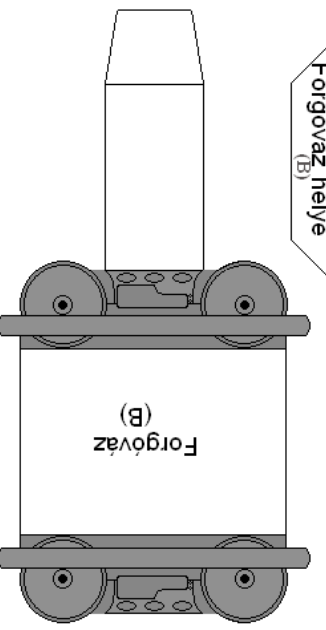
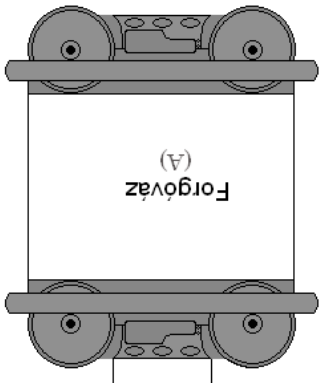
Forgóváz helye^(A)

Forgóváz helye^(B)

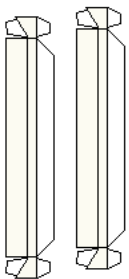
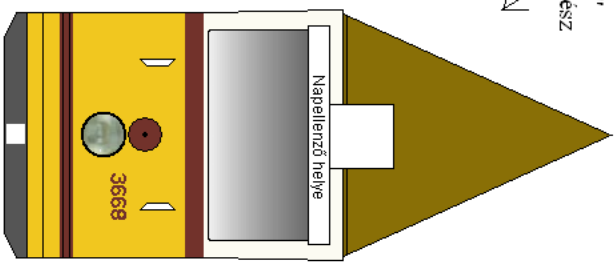
Gyártotta: Ganz
Ismert neve: Shuka
Tulajdonos: BKV Rt.
Pályaszám: 3668
Gyártási év: 1942/1943
By Nohab, 2011

Forgóváz^(A)

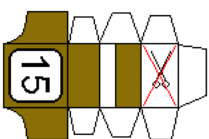
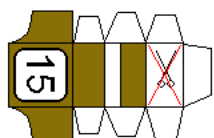
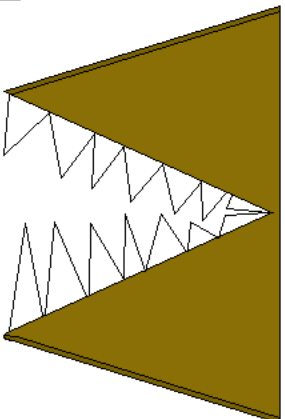
Forgóváz^(B)



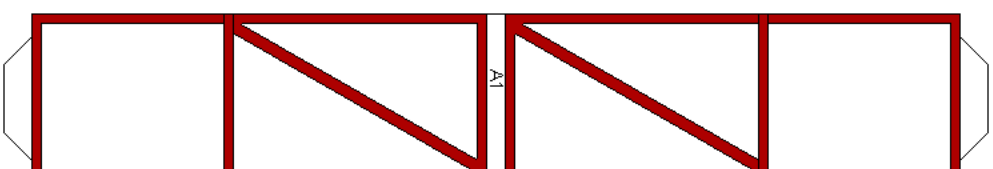
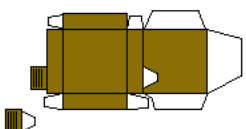
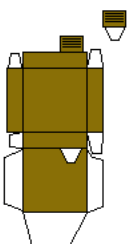
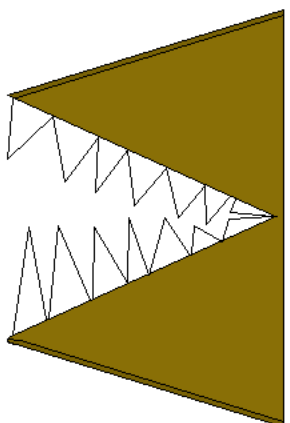
"B"
orientáció



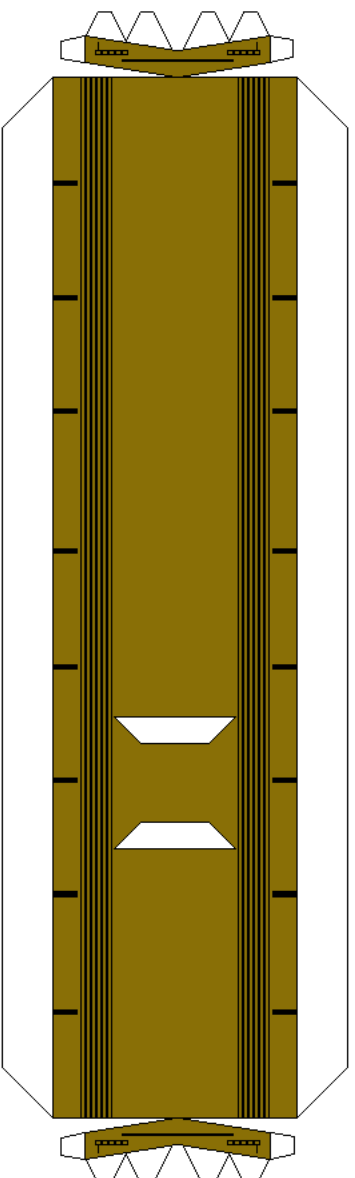
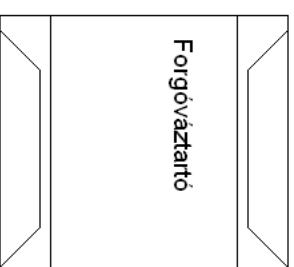
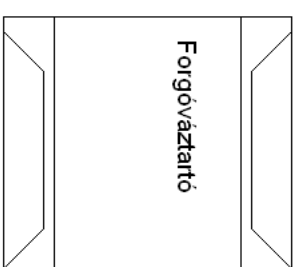
"A" tetőoldalek



"B" tetőoldalek



A1



Saját, otthoni felhasználására olyanra alakíthatod, amilyenre csak szeretnéd! De a közzevévése engedélyköteles!